

polytec

DECORATIVE

polytec

[www.polytec.com.au](http://www.polytec.com.au)

p 1300 300 547

ISSUE: 11d



polytec offer an express sample service.

Visit [www.polytec.com.au](http://www.polytec.com.au) to order your free sample.

DECORATIVE  
18mm doors & panels

Proudly  
Supporting  
 McGrath  
Foundation

Find your local supporting cabinet maker:  
[www.polytec.com.au/mcgrath-foundation](http://www.polytec.com.au/mcgrath-foundation)





# DECORATIVE 18mm doors & panels

Style the surfaces within your project using **polytec**'s extensive Decorative 18mm range. Blend unique textures, tones, and finishes to achieve a contemporary look.

Mix warm colours with cool accents, or matt surfaces with a timbergrain to create visual interest. Choosing from the Decorative 18mm range enables you to achieve a truly leading-edge design. Tall cupboards featuring timbergrains or silky finishes that stretch from floor to ceiling provide the perfect backdrop for your choice of ultra glossy or super matt doors and drawers.

The Decorative 18mm range is a collection of **polytec**'s leading and most innovative ranges – Createc, Venette, Woodmatt, Ravine, Legato, Ultramatt and Ultraglaze. Designed to be complementary, these ranges allow you to infuse your spaces with the latest colours and finishes.

**polytec**'s Createc range allows your kitchen to shine. Its ultra high gloss surface delivers sharp lines and a polished, sophisticated finish.

**polytec**'s leading edge innovation in decorative doors & panels delivers exceptional fingerprint resistant technology in the purest matt form. The silky smooth finish of Venette creates an inviting and pleasant touch experience, whilst the pure matt surface assures low light reflection.

Create a feature using **polytec**'s new 18mm Woodmatt range, incorporating colours such as Batten Oak and Rattan.

**polytec**'s Ravine range showcases a raw embossed natural touch timber surface lightly coloured with warm and inviting shades.

**polytec**'s Legato range features a super matt, non-reflective finish. This subtle, understated look is imbued with lighter, timber tones and delivers a fresh refined presence.

**polytec**'s Ultramatt and Ultraglaze doors & panels are an acrylic, premium surface appropriate for residential and commercial joinery. The fingerprint and scuff resistant properties of Ultramatt make it a suitable option for high-traffic zones, while Ultraglaze remains an innovative high gloss finish in the decorative surfaces industry.

Blend your choices to capture the latest design trends and style your ideal space.





Doors and panels in **DECORATIVE** 18mm Botanic Venette.  
Butlers pantry doors in **DECORATIVE** 16mm Notailo Walnut Matt.





Doors, drawers and panels in **DECORATIVE 18mm New Ultra White Createc**.  
Overhead doors and shelving in **DECORATIVE 18mm Sepia Oak Ravine**.

## Createc / ultra high gloss

New  
Ultra White

Cinder

Ochre  
Figured-Wood

Cavia  
Lini

Onyx  
Figured-Wood

Sienna  
Figured-Wood

Black

Black  
Wenge

Jamaican  
Walnut

**polytec** swatches and samples represent a small area of the overall colour structure.  
To view the large colour sample, visit [www.polytec.com.au](http://www.polytec.com.au).  
Dark coloured surfaces will show fingerprints and require more care and maintenance than lighter coloured surfaces. It is recommended to test a product sample prior to colour selection.

Available finishes C = Createc





Bar panels in **DECORATIVE** 18mm Black Venette.  
Drawers in **DECORATIVE** 18mm Ultra White Venette.  
Panelling in **DECORATIVE** 16mm Tasmanian Oak Woodmatt.

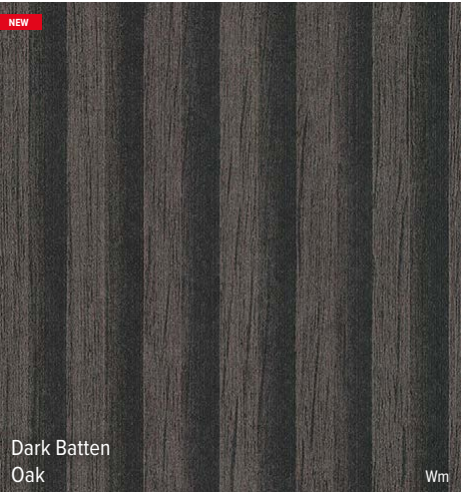
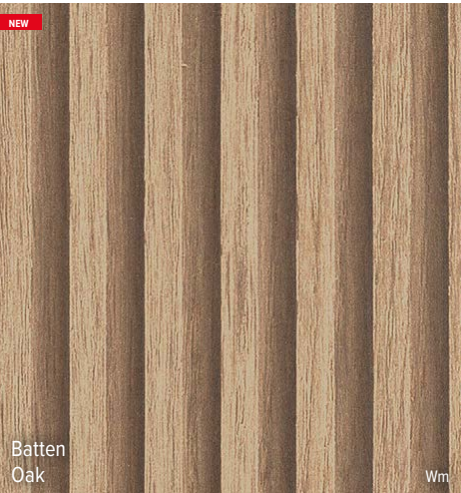
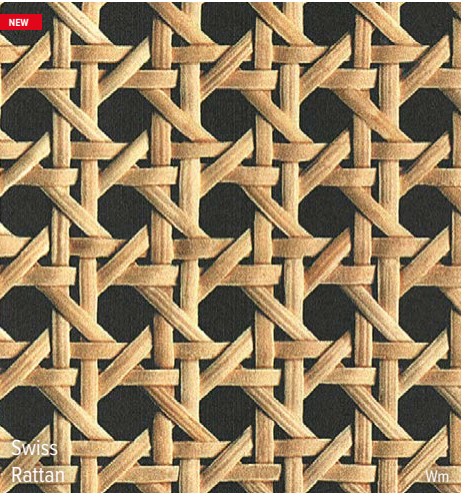
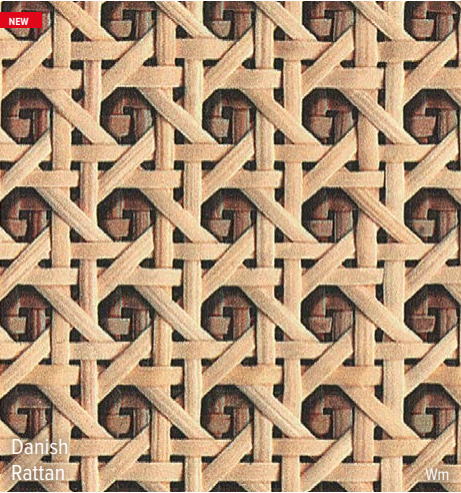
Venette /pure matt

Ultra White	Blossom White	Avion Grey	Nouveau Grey	Canterbury Grey
Forage	Topiary	Oasis	Habitat	Adriatic
Arabica	Cinder	Ferro	Botanic	Oxford
Black Wenge	Black			

**polytec** swatches and samples represent a small area of the overall colour structure.  
To view the large colour sample, visit [www.polytec.com.au](http://www.polytec.com.au).  
Dark coloured surfaces will show fingerprints and require more care and maintenance than lighter coloured surfaces. It is recommended to test a product sample prior to colour selection.

Available finishes V = Venette

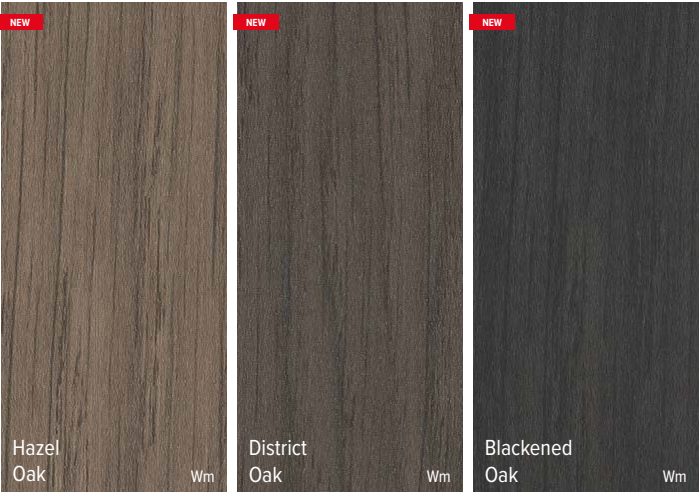
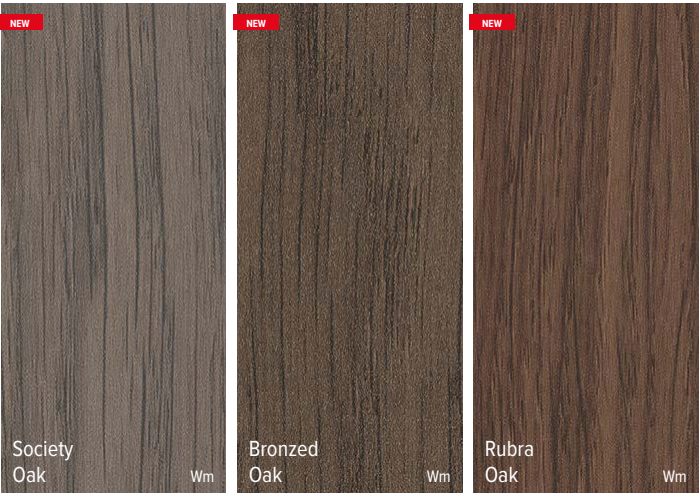
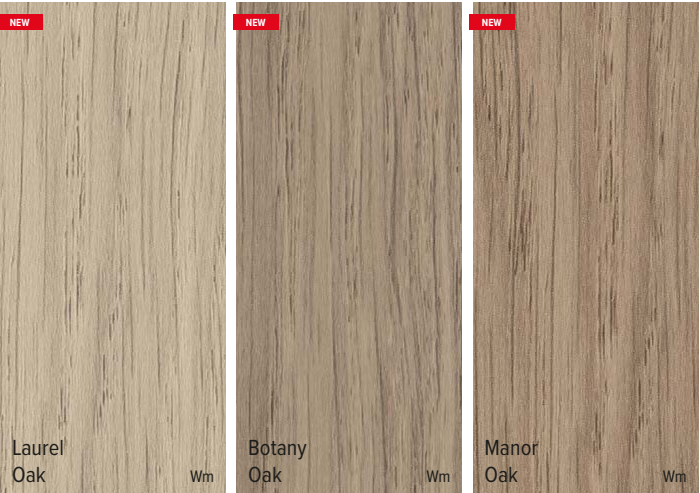




Available finishes Wm = Woodmatt



Wall lining in **LAMINATE** Batten Oak Woodmatt and **LAMINATE** Prime Oak Woodmatt.  
Bedside table in **XENOLITH** Marmo di Monte Smooth.  
Wardrobe **THERMOLAMINATED** Sussex door frames in Prime Oak Woodmatt with **DECORATIVE** 9mm Batten Oak Woodmatt inserts.  
Wardrobe panels in **DECORATIVE** 16mm Prime Oak Woodmatt.  
Drop front benchtop in **XENOLITH** Marmo di Torre Smooth.  
Wall lining in **LAMINATE** Marmo di Torre Smooth.



Available finishes Wm = Woodmatt





Doors, panels and shelving in **DECORATIVE** 18mm Soft Walnut Ravine.

Ravine / linear embossed wood grain

Ravine solids

					
Bleached Walnut R	Soft Walnut R	Natural Oak R	Satra Wood R	Blossom White R	Gossamer White R
					
Drifted Oak R	Maison Oak R	Sepia Oak R	Notaio Walnut R	Avion Grey R	Greige R
					<p><b>polytec</b> swatches and samples represent a small area of the overall colour structure. To view the large colour sample, visit <a href="http://www.polytec.com.au">www.polytec.com.au</a>. Dark coloured surfaces will show fingerprints and require more care and maintenance than lighter coloured surfaces. It is recommended to test a product sample prior to colour selection.</p>
Distressed Wood R	Tessuto Milan R	Artisan Oak R	Café Oak R	Elemental Grey R	
					
Maroso Milan R	Char Oak R	Black Wenge R	Canterbury Grey R		

Available finishes R = Ravine







Doors, panels and drawers in **DECORATIVE** 18mm Bespoke Legato and **DECORATIVE** 16mm Notaio Walnut Woodmatt.  
Pantry doors in **DECORATIVE** 18mm Black Venette.



Legato /super matt

Bleached Walnut L

Papyrus L

Crisp White L

Drifted Oak L

Montage L

Bone White L

Maison Oak L

Silk L

White Cement L

Maroso Milan L

Serene L

Bespoke L

Grey Cement L

Castel L

Doors, panels and drawers in **DECORATIVE** 18mm Bespoke Legato.  
Open shelving in **DECORATIVE** 16mm Notaio Walnut Woodmatt.

**polytec** swatches and samples represent a small area of the overall colour structure.  
To view the large colour sample, visit [www.polytec.com.au](http://www.polytec.com.au).  
Dark coloured surfaces will show fingerprints and require more care and maintenance than lighter coloured surfaces. It is recommended to test a product sample prior to colour selection.

Available finishes L = Legato





Doors, panels and drawers in **DECORATIVE** 18mm Black Ultramatt.  
Overhead cupboard and pantry doors in **DECORATIVE** 16mm Angora Oak Woodmatt.

## Ultramatt / premium matt

White	Um	Jasmine	Um	Sterling	Um
Pewter Metallic	Um	Mink	Um	Lava	Um
Mineral Metallic	Um	Obsidian Metallic	Um	Black	Um
Evergreen	Um	Navy	Um		

**polytec** swatches and samples represent a small area of the overall colour structure. To view the large colour sample, visit [www.polytec.com.au](http://www.polytec.com.au). Dark coloured surfaces will show fingerprints and require more care and maintenance than lighter coloured surfaces. It is recommended to test a product sample prior to colour selection.

Available finishes Um = Ultramatt





Doors and panels in **DECORATIVE** 18mm Superior White Ultraglaze.



## Ultraglaze / premium gloss

Arctic Ice	Ug	Superior White	Ug	Cream	Ug
Pearl Metallic	Ug	Royal Oyster	Ug	Champagne Metallic	Ug
Cloudy Grey	Ug	Anthracite Metallic	Ug	Phantom Black	Ug

**polytec** swatches and samples represent a small area of the overall colour structure. To view the large colour sample, visit [www.polytec.com.au](http://www.polytec.com.au). Dark coloured surfaces will show fingerprints and require more care and maintenance than lighter coloured surfaces. It is recommended to test a product sample prior to colour selection.

Available finishes Ug = Ultraglaze





Doors, drawers and panels in **DECORATIVE** 18mm Crisp White Legato.  
Overhead cupboard doors in **DECORATIVE** 16mm Tasmanian Oak Woodmatt.



## ENVIRONMENT & SUSTAINABILITY

At **polytec**, sustainability is ingrained in the core of our business operations, products, and work practices. Our continual dedication to improving and appropriately managing the environmental impact of our products involves our commitment to steadfastly reducing our carbon footprint, minimising waste, optimising energy efficiency and integrating ethically sourced materials into our product ranges.

Our MDF and Particleboard are manufactured from managed and renewable plantation pine that has been Green Tag, Responsible Wood and PEFC certified. All **polytec** board products are manufactured from E0 or E1 substrates, with particleboard now made from a percentage of recycled wood material.

In our pursuit of responsible waste management, we implement various recycling programs encompassing aluminium, metals, used oils, and timber waste, which is repurposed into packaging, particleboard, and energy. We actively engage with local government environmental initiatives, subject ourselves to voluntary audits, and uphold our internal Energy and Carbon Management Policy (ECM), aligned with the Australian Government's Energy Efficiency Opportunities (EEO) program.

Our network of national facilities boasts over 53,000 solar panels, generating 15,238,000 kWh of renewable energy — equivalent to planting 7,377 trees and preventing the emission of 11,000 tonnes of CO2. The Oberon facility is Australia's largest rooftop solar system, with 27,000 panels spread across 8 hectares of rooftop.

In our ongoing commitment to sustainability, **polytec** continues to refine and enhance our practices to contribute to the establishment of a circular economy, fostering a better future for all.

**polytec** doors, panels and benchtops are certified Australian Made & Owned.

## CARE & MAINTENANCE

**polytec** do not recommend the use of Decorative 18mm products in a sliding or non-fixed application (hinged) unless the use of a mechanical stabilising system is fitted. Decorative 18mm doors and panels are supplied with a protective film to protect the surface during installation. This film must be removed within three months of installation.

Your Decorative 18mm doors and panels are made from a Moisture Resistant Medium Density Fibreboard (MR MDF), but as with many wood based panels, they are not waterproof. Care should be taken to wipe up spills immediately, ensuring the doors are not exposed to high or continuous levels of moisture, steam and humidity.

Decorative 18mm doors and panels should be cleaned by wiping down with a damp soft cloth and warm soapy water. For more stubborn stains use a mild household cleaning spray. Always ensure you refer to the recommendations provided by the manufacturer of the cleaning product before use.

By following these simple steps you should retain a beautiful kitchen surface for many years.

Visit [www.polytec.com.au](http://www.polytec.com.au) for specific care and cleaning information.

## IMPORTANT

Darker colours will show superficial wear and tear more readily than lighter coloured surfaces and require more care and maintenance.

Createc and Venette are a painted product and as with many painted materials a slight odour may occur when fresh, or if not permitted to air. The products comply with Green Building Council of Australia. Green Star Design & As Built V1.3 – 13.1.2B & 13.2. Green Star Interiors V1.3 – 12.1.2B for emission of VOCs.

The colours and details shown in this brochure are to the highest standards in printing. However, they should only be used as an indication of actual product colour. To order your free colour sample visit [www.polytec.com.au](http://www.polytec.com.au).

**polytec** swatches and samples represent a small area of the overall colour structure, to view a large colour sample or a full sheet design, visit [www.polytec.com.au](http://www.polytec.com.au).

The use of our current samples gives the colour and finish that a customer would expect to receive. Samples are provided for colour and finish selection and **polytec** recommend testing a sample for fingerprint resistance and ease of cleaning. **polytec** does not guarantee exact colour matches across product ranges due to colour variation in each product group.

## COMPLEMENTARY RANGES

- |  |  |
|--|--|
| <b>BENCHTOPS</b> range                           | <b>DECORATIVE</b> 16mm doors & panels        |
| <b>XENOLITH</b>                                  | <b>THERMOLAMINATED</b> doors & panels        |
| <b>STECCAWOOD</b> prefinished decorative battens | <b>ALFRESCO &amp; ALUMINIUM</b> framed doors |
| <b>35mm ARCHITECTURAL</b> doors                  | <b>WARDROBE</b> range                        |

COVER IMAGE: Doors and panels in **DECORATIVE** 18mm Botanic Venette.