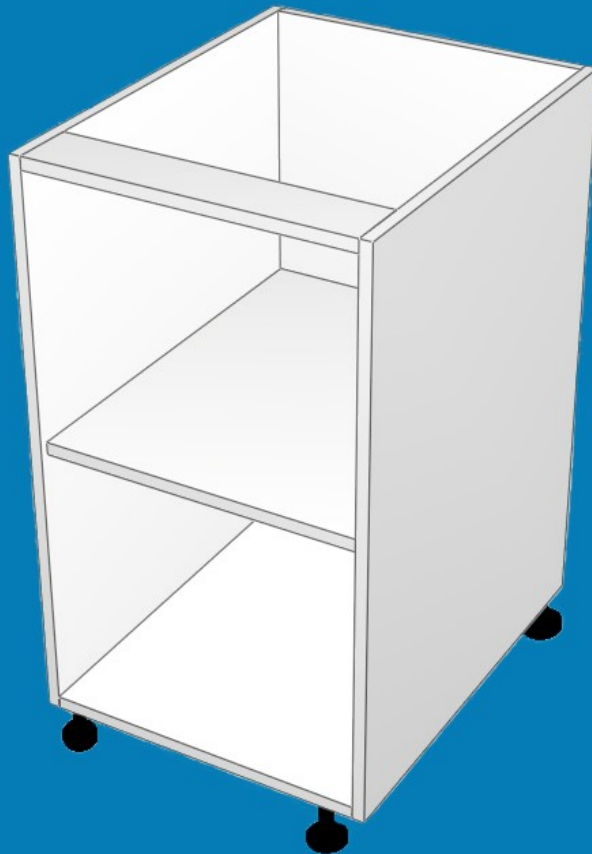


HOW TO ASSEMBLE BASE CABINETS



Tools Required:



Electric Drill



Mallet

+ Phillips screwdriver bit

+ 3mm countersink bit

Important Information: READ FIRST

-Always pre-drill for screws first using the 3mm Drill Bit.

-Knock in any bench top connectors while the carcass pieces are flat on surface.

-Ensure all edges are flush before fixing pieces in place. Use a rubber mallet to help align edges as needed.

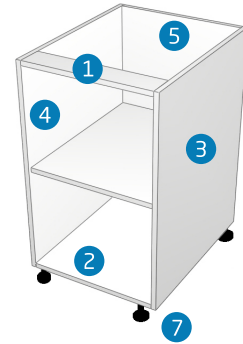
-If screw holes are seen along the mortise & Tenon inside the cabinet, the shelf/panel needs to be flipped around the other way

Step 1:

Locate all the required parts for your eKitchens cabinet

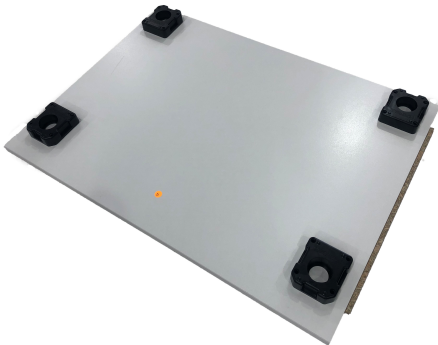
You will need:

1. Front rail
2. Bottom Panel
3. Right Side Panel
4. Left Side Panel
5. Back Panel
6. Screws
7. Adjustable legs



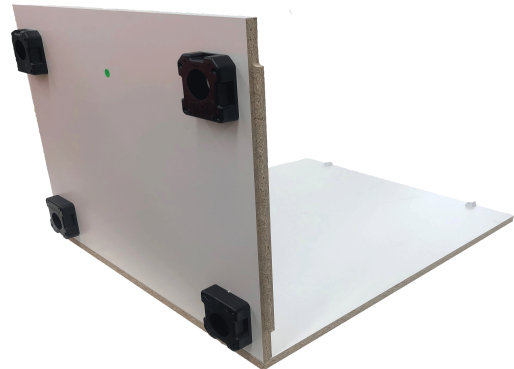
Step 2:

Lay the bottom panel flat on surface and knock in or screw in (35mm screws) all your adjustable leg bases, DO NOT attach the leg to it's base yet. All bases should point towards the front or back of the cabinet (which ever is the closest side) as shown below.



Step 3:

Lay the back panel flat on surface with grooves facing upwards and attach the bottom panel using the Mortise & Tenon. Make sure the leg bases are underneath the bottom.



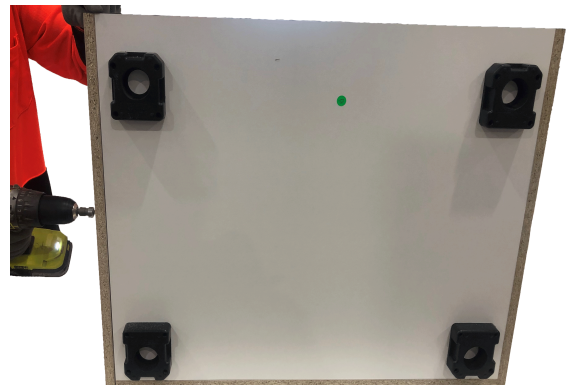
Step 4:

Attach the right side panel using the Mortise & Tenon and use the rubber mallet to ensure the edges are flush. Fix the right side panel in place using 45mm screws along the bottom of the cabinet.



Step 5:

Repeat Step 4 for the left side panel.



Step 6:

Standing at the top of the cabinet, hold both sides in and stand the cabinet up onto the leg bases.



Step 7:

Screw the right side panel in along the back of the cabinet using 45mm screws.



Step 8:

*For Recessed rail cabinets, skip this step

Holding the left side panel in place, attach the front rail and screw in place on both sides.



Step 9:

Screw the left side panel in along the back of the cabinet using 45mm screws.



Step 10:

If required, attach any mullions by screwing in through the top & bottom panel of cabinet using 45mm screws.

If connecting 2 mullions together, use 28mm screws.



Step 11:

Attach your Smart Adjustable Legs into the Leg bases and adjust the legs so they are the same height as your kickboard.

Please note: Smart Legs are adjustable from 88mm - 180mm, to achieve heights lower than 130mm, please remove leg from it's leg base and 1/4 turn then push back in, as shown below.



Step 12:

Attach hinge plates where required ensuring the arrow on the plates is facing the front of the cabinet.



Step 13:

You have now finished assembling your eKitchens base cabinet!

