

StyleLite®

Superior Indoor Cabinetry

TruMatte and TruGloss

stylelite.net



Made in Australia

EGR
DECOR

StyleLite®

With TruColor's Advanced Multilayer UV Barrier Technology

StyleLite is the perfect material to create superior kitchen and bathroom cabinets, bespoke furniture and feature panels.

It's an ideal solution for cabinetmakers, builders, architects and discerning homeowners looking to add the perfect finish to their creations.

Superior Features

- Available in TruGloss & TruMatte finishes
- Very easy to clean and maintain
- UV and colour change protected
- Durable surface that won't chip, crack or delaminate
- Fingerprint resistant (TruMatte)
- Repairable surface (TruGloss)
- Up to 10 Year residential indoor warranty

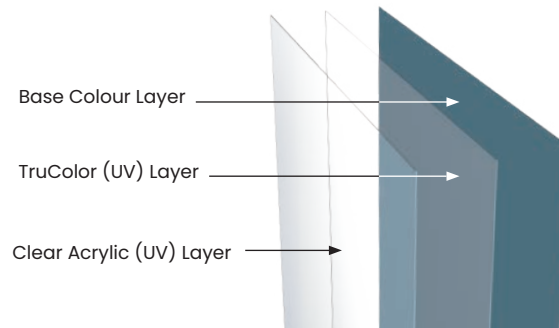


Applications

- Kitchen and vanity cabinets
- Office furniture and partitions
- Caravans and RV joinery
- Retail displays

TruColor is the latest and most advanced StyleLite sheet technology.

TruColor features a unique combination of clear and coloured layers that are fused together during manufacture using a sophisticated multilayer die and triple extrusion process.



TruColor features a unique three layer combination





No Fingerprints
(TruMatte)



Easy to Clean



Environmental



Quality



Repairable
(TruGloss)



UV
Protected



Vertical
Application

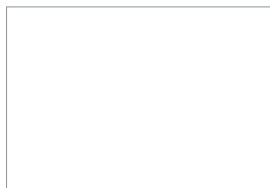


Easy to Work

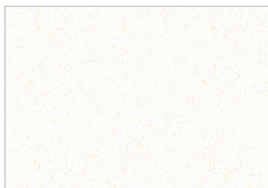


Quick to Install

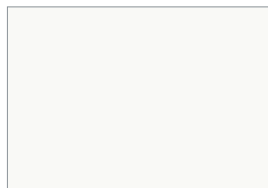
TruGloss



Arctic



Arctic Pearl (Metallic)



Alabaster



Sand



Ash



Dove



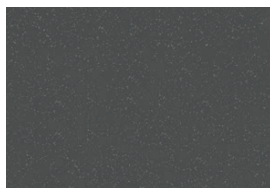
Silver (Metallic)



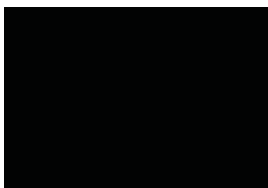
Slate



Charcoal



Graphite (Metallic)

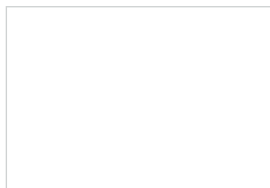


Carbon

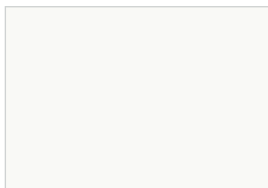
Due to the nature of the printing process, the colours and images depicted throughout this brochure may vary compared to the actual finished products' colour. Images and colours are to be used as a guide only.



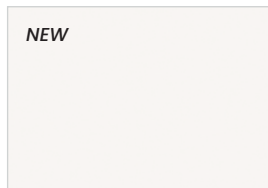
TruMatte



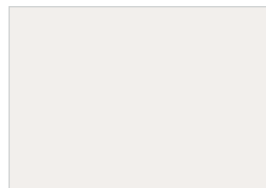
Arctic



Alabaster



Cottonseed



Shell



Jura



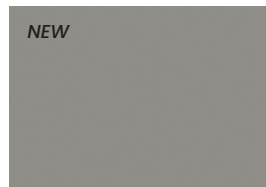
Ash



Mountain



Dove



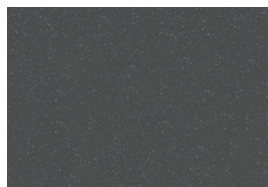
Shade



Slate



Charcoal



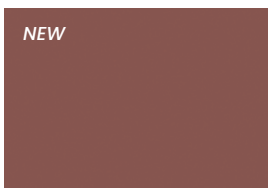
Graphite (Metallic)



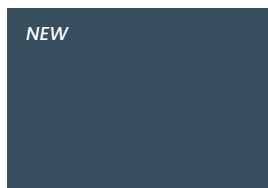
Oceanic



Rainforest



Cinnabar



Mariana



Carbon

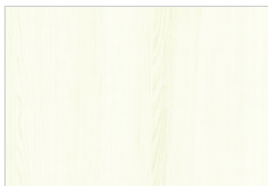


TruNatur Premium Polymer Veneers

StyleLite TruNatur range of Premium Polymer Veneers is perfectly suited to complement the StyleLite Acrylic decors. TruNatur features a carefully selected suite of natural woodgrains that have been further enhanced with a broad range of tones, from light and classic through to dark, rich tones. Each TruNatur panel features a pre-finished, highly durable, lightly embossed surface that delivers the luxurious look and feel of naturally smooth sanded solid timber.



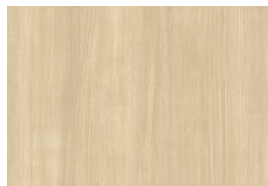
TruNatur - Colour Range



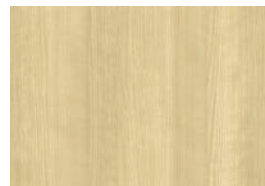
Winter Ash



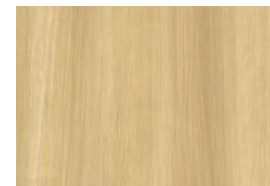
Misty Oak



Hazelnut Oak



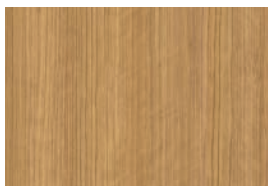
Coastal Ash



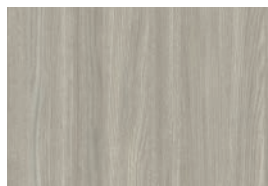
Natural Oak



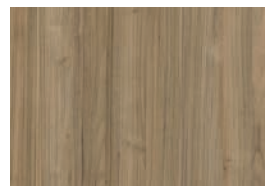
Cinnamon Teak



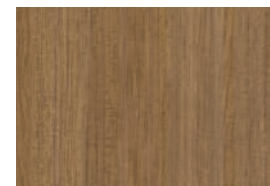
Blackbutt



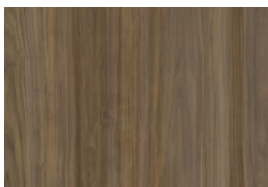
Weathered Oak



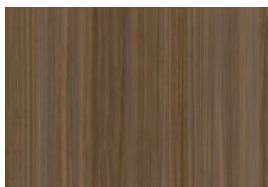
Tropic Walnut



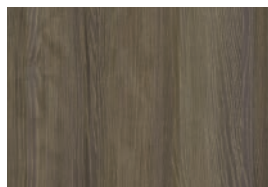
Spotted Gum



Classic Walnut



Rich Eucalypt



Charred Ash



Cinder Oak

Due to the nature of the printing process, the colours and images depicted throughout this brochure may vary compared to the actual finished products' colour. Images and colours are to be used as a guide only.

Design Guidelines

StyleLite is designed for use in vertical surface applications only and is not intended for structural applications.

For full details, refer to the Installation and Specifications Guide available at www.stylelite.net, or consult your local distributor.

The Environment

None of the colour pigments used in StyleLite contain heavy metals, such as lead or cadmium making it the best choice for modern interiors.

- GreenTag Platinum Health Rated
- GreenTag PHD is recognized by WELL™ and LEED® Material Transparency & Optimization credits

- Meets Green Star® 'Buildings v1.0' as recognized for Responsible Finishes

Edge Finishing

All StyleLite compatible Edge Banding is of premium quality and offers high resistance to heat, abrasion, impact and colour fade.

Guaranteed Quality

StyleLite panels are created by laminating StyleLite acrylic sheets front and back to a variety of substrates using our premier polyurethane (PUR) hot melt bonding system.

This system produces a ripple-free finish that is highly resistant to heat, moisture and environmental changes over time.

EGR Decor production facilities are recognized for achieving ISO 9001 Quality Management certification for their consistent performance and quality systems.

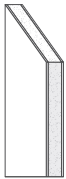
Care & Maintenance

StyleLite products can be cleaned easily using a wet microfiber cloth or chamois with non-abrasive soap.

TruGloss's ultra-high gloss finish provides a mirror like appearance that can be refinished using a good quality liquid polish (Pencil Hardness 4H).

TruMatte's smooth matte finish offers increased scratch resistance compared to gloss surfaces and is highly fingerprint-resistant (Pencil Hardness 6-7H).

StyleLite MDF Panels



Regular StyleLite panels, suitable for a range of general purpose applications. Uses premium quality MR MDF, rated to formaldehyde emissions standards EO or TSCA Title VI. Perfect for kitchen and vanity doors, furniture, hinged wardrobe doors and general cabinetry.

Double sided and single sided (with colour matched backer) options available in both TruGloss and TruMatte.



StyleLite Lightweight Plywood Panels

Lightweight panels, perfect for when weight is a consideration. Uses high quality MR lightweight plywood. Great for interior fit outs in caravans and RVs—from furniture and kitchen cabinetry to vanity doors and panels.

Available in both TruGloss and TruMatte.

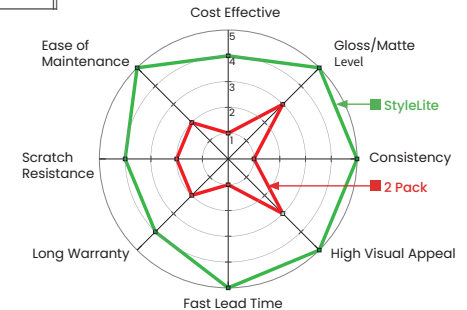
StyleLite Sheet



StyleLite Sheet is manufactured from high quality acrylic-capped ABS and features a reverse-side treatment for superior bonding performance. It is provided ready for manual or machine lamination onto a variety of substrates.

Product	Substrate	Sheet Size (nom)	Region	Weight	Finish
StyleLite MDF Panels*	MR MDF E0	2440 × 1200 × 18mm	Global	13.5 kg/m ²	TruGloss and TruMatte
	MR MDF E0	3000 × 1200 × 18mm	Global	13.5 kg/m ²	TruGloss and TruMatte
Lightweight Plywood Panels	Lightweight Plywood	2440 × 1220 × 14mm	Global	7 kg/m ²	TruGloss and TruMatte
	Lightweight Plywood	2440 × 1220 × 17mm	Global	8 kg/m ²	TruGloss and TruMatte
StyleLite Sheet	StyleLite Sheet		Global	1.08 kg/m ²	TruGloss
	StyleLite Sheet		Global	0.86 kg/m ²	TruMatte

*Other Substrates and panel sizes available on request.




StyleLite v 2 Pack Comparison



Redefining Decorative Solutions

EGR Decor is a global supplier of high-quality, decorative vertical surfaces for the building industry. We have built a more than 50-year heritage of manufacturing, design and technology to become experts in gloss and matte cabinetry for both interior and exterior applications, offering designers, fabricators and homeowners a contemporary range of decorative paneling solutions for commercial and residential applications.



 Made in Australia



Quality
ISO 9001



StyleLite Carbon TruMatte

220-15124 - StyleLite brochure_V20

PROUDLY DISTRIBUTED BY:

EGR Decor



📍 45 Machinery St, Darra, Brisbane
Queensland 4076, Australia

🌐 www.stylelite.net

✉ info@stylelite.net

☎ 1800 347 347



1. EGR expressly disclaims any representations or warranties of any kind, whether express or implied, as to the accuracy, currency, completeness and/or the merchantability or fitness for a particular purpose of any information contained in or provided via this documentation and/or any service or product described or promoted in this document. 2. It is the customer's responsibility to thoroughly examine the product using a qualified person, to determine whether it is suitable for the application it was purchased for. 3. The receiver of our products is fully responsible to check and to take into account possible third party's patent rights, as well as the existing laws in the country of installation prior to installing our product. 4. No liability may be derived from these images or statements nor from our free technical advice. 5. EGR reserves the right to change, add or remove colours or product without notice. 6. EGR Decor and EGR are registered trademarks. 7. Images and colours should be used as a guide only. 8. Ten Year Indoor Warranty: The EGR Decor warranties cover faulty materials for the periods specified on the relevant product warranty documents. The EGR Decor warranties commence from the date of sale by EGR, they are not transferable and are subject to the terms, conditions and exclusions contained within those warranties.

© Copyright 2024 / Patent Pending Oakmoore Pty Ltd trading as EGR.